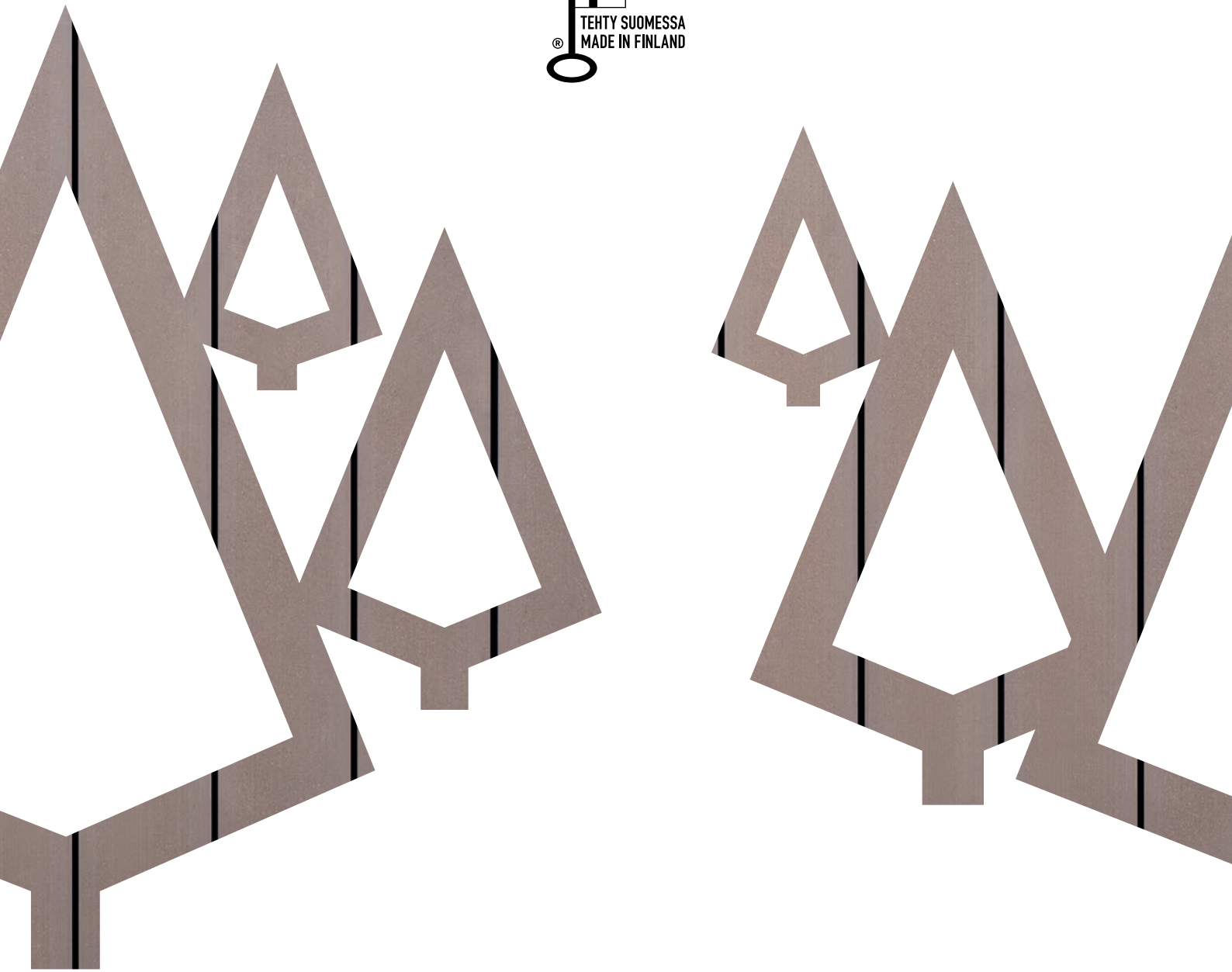




THERMOWOOD COMPOSITE TWPC



LUNAWOOD.COM





Radisson Blue Marina Palace, Turku. Product: Luna TWPC 42 x 200 mm Graphite Grey

# ELEGANT, ECOLOGICAL LUNAWOOD THERMOWOOD COMPOSITE

Lunawood Thermowood Composite is a beautiful, high-quality composite material for all outdoor applications in which a long service life, easy maintenance and a modern appearance are required.

This material is the only composite board designed and manufactured in Finland. It is also a truly wood-based material, which is evident from its fragrance. Lunawood Thermowood Composite contains 65% of Thermowood fibre which brings with it all of the special properties of Thermowood, including improved dimensional stability and non-toxicity. These features also make Lunawood Thermowood Composite an ecological choice.

## DURABLE AND ELEGANT

With Thermowood Composite, you can achieve a polished, elegant and durable result. The range offers four beautiful colours and two surface textures: one side of the board is brushed and the other is grooved. You can select either side as the top surface.

Two different thicknesses offer additional style options to choose from. With dimensions of 42 x 200, the market's largest Thermowood Composite board is the material of choice for jetties and public decking areas. This board has jokingly been dubbed 'BigBoy'. For the outdoor areas of private homes and holiday houses, the 26 x 140 Thermowood Composite board is an ideal option.

The boards are fixed with a hidden fixing system and the edges are given the finishing touch with L-strips, ensuring a stylish result.

## WHY CHOOSE ECOLOGICAL LUNAWOOD THERMOWOOD COMPOSITE?

**SUSTAINABLE** – contains 85% non-toxic recycled materials: 65% is Lunawood Thermowood fibre and rest is Fortum Circo®-recycled plastics.

**DURABLE AND DIMENSIONALLY STABLE** – minimal thermal expansion of 1 mm/m, at temperatures of  $\pm 50^{\circ}\text{C}$ . The material's dimensional stability allows small gaps at joints.

**ELEGANT AND MODERN APPEARANCE** – the choice of four stylish colours. The hidden fixing system makes installation quick and gives the structure a finished appearance. The edges can be finished with L-strips.

**SAFE** – the Thermowood Composite material feels pleasant under foot and it does not splinter or crack. The surface is not slippery, even when wet.

**EASY TO MAINTAIN** – regular washing with a brush is enough.



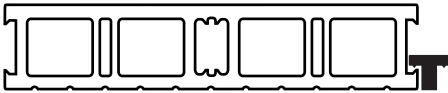
## LUNA TWPC 42 X 200 'BIGBOY' | DECKING PLANK

This plank, which is the largest Thermowood Composite board available on the market, is ideal for public spaces where excellent resistance to wear is required and for decking areas when an elegant and majestic appearance is desired. Thanks to the material's cell-like structure, lighting and heating cables can be installed neatly inside the profile. When necessary, the planks can be cut lengthwise through the centre to make them easier to use for steps and decking edges.

With normal loads, the joist interval is max. 800 mm, and 600 mm under higher loads. The hidden fixing system enables a uniform 8 mm gap between the planks without visible screws. The edges can be finished with aluminium L-strips. When necessary, the gaps between planks can be covered with gap strips to prevent debris from falling underneath the decking.



Length	4 m
Amount required	4.85 rm / m²
Package	40 boards / package
Weight	5.3 kg / m²
Joist centres	600–800 mm



Hotel Gustavelund, Tuusula. Product: Luna TWPC 42 × 200 mm Mocca brown



Glazed patio, Lahti. Product: Luna TWPC 26 × 140 mm Black

## LUNA TWPC 26 x 140 | DECKING BOARD

The high-quality Thermowood Composite board is an ideal choice for patios, jetties and other outdoor areas of private homes where a modern look, easy maintenance and dimensional stability are desired. Thanks to the material's cell-like structure, lighting and heating cables can be installed neatly inside the profile.

The maximum joist interval is 450 mm. The installation is performed with a hidden fixing system, with a uniform 6 mm gap left between the boards. The edges can be equipped with aluminium L-strips. When necessary, the gaps between the boards can be covered with gap strips to prevent debris from falling underneath the decking.



Length	4 m / 6 m
Amount required	6.85 rm / m²
Package	84 boards / package
Weight	2.7 kg / m
Joist centres	max. 450 mm





# GOOD TO KNOW ABOUT THERMOWOOD COMPOSITE

Lunawood Thermowood Composite is an ecological choice. It consists of 87 % of recycled materials. It contains 2/3 PEFC-certified Thermowood fibre, derived as a side product from the planing line in our factory in Iisalmi, and 1/5 good-quality Fortum CIRCO® recycled polypropylene plastic, along with filler and colouring agents. These materials make it the most dimensionally stable composite on the market. The product does not contain any toxic substances.

Because of its high Thermowood fibre content, the product changes its colour slightly as a result of exposure to sunlight until it reaches its final hue.

The Thermowood fibres of through-dyed material bind the colouring agent, some of which may come off as small particles. This can be reduced by washing the deck regularly.

Like all decking materials, Thermowood Composite will also warm up in direct sunlight.

## SURFACE PROPERTIES

Thermowood Composite offers exceptionally good resistance to wear and weather. As the composite material is sensitive to impact and scratching, any garden furniture placed on it should be equipped with furniture pads. When installing the product, avoid rubbing or scratching the surface. Experience has shown that the original colour revealed by scratching will even out over time due to UV radiation.

To prevent damage to the material, avoid hard impact and point loads. The board edges in particular are more susceptible to damage, and we recommend protecting them with L-strips.

# INSTALLATION ACCESSORIES



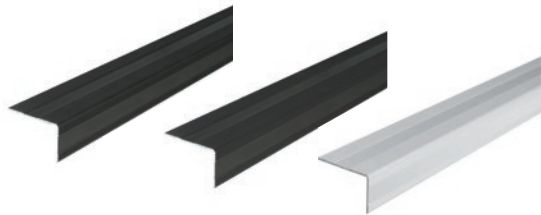
### Luna T-Hide Clip

For the installation of the Luna TWPC 42 x 200 Thermowood Composite boards.  
Colour: black.  
Amount required: 1.7–2 pcs/m.



### Luna FastClip

For the installation of the Luna TWPC 26 x 140 Thermowood Composite boards.  
Colour: black, brown or grey.  
Amount required: 2.5 pcs/m.



### Luna L-strip

An aluminium strip with a grooved surface for edges and steps. Fixed with screws, pop rivets or fixing paste. Suitable for use with either Thermowood Composite profile.  
Colours: black, brown and grey.



### Luna Gap strip 26 or 42

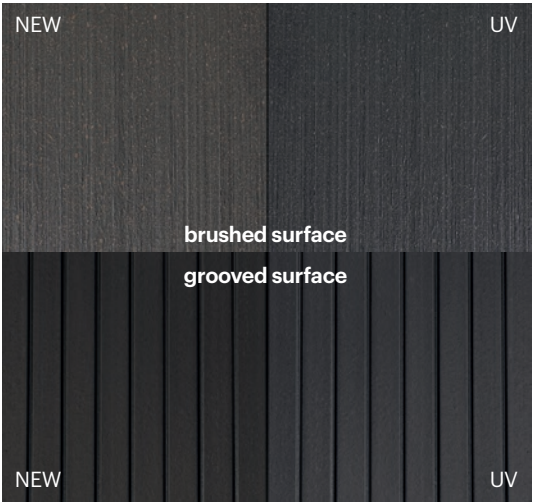
Installed on a finished decking by pressing the strip between the Luna TWPC decking boards to prevent debris from entering the gap. Selected in line with the thickness of the board.  
Colours: black, brown and grey.  
Material: rubber.

# THE EFFECT OF UV RADIATION ON THERMOWOOD PLASTIC COMPOSITE

Lunawood Thermowood Composite has a higher wood content than any other composite product available on the market, which is evident in the factory-delivered product. The brand-new product's colour may be slightly different from the expected colour. As a result of exposure to UV radiation, the colour of the Thermowood fibre turns to a cool grey, giving the product its final hue. This takes place 6 to 12 weeks after installation. The final colour of the product and the rate of the colour change depend on the amount of UV radiation the material is exposed to.

The colours may differ slightly from those shown below: the image on the left shows a new product (NEW), and the product after six weeks of exposure to sunlight (UV) is shown next to it. Colour changes in both surface textures are also shown.

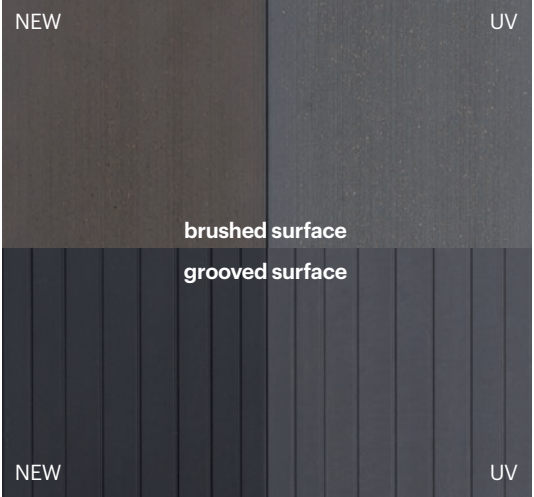
## BLACK



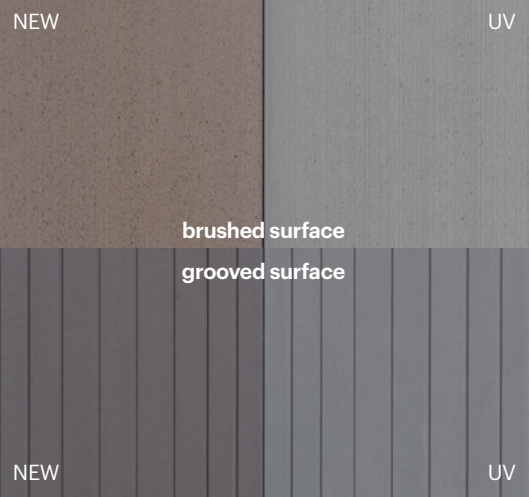
## MOCCA BROWN



## GRAPHITE GREY



## SILVER GREY



# MAINTENANCE

- Thermowood Composite is easy to maintain and it does not require any surface treatment. However, the high wood content enables treatment of the brushed surface with a suitable wood oil. This gives it a deeper shade and reduces susceptibility to visible grease smudges and other stains. The treatment should be performed after sufficient exposure to UV radiation. To ensure the desired result, test the oil first on one board and allow it to dry.
- The brushed surface can be lightly sanded. Sanding brings out the original colour but it will change due to UV radiation, as described above.
- As the product is not coated, any stains, e.g. food and grease smudges, should be removed immediately to prevent them from discolouring the wood fibre.
- The decking can be washed with water (and a mild detergent). In general, Thermowood Composite tolerates pressure washing better than wood, but you should always test the correct pressure in a concealed location.



**Lunawood** is the global market leader and pioneer in the field of thermally modified wood. We love Nordic forests and their wildness and strength. Our mission is to connect urban people and nature. Through our products, we bring the calming influence of forests to modern living environments across the world.

The planing of Lunawood's thermally modified wood generates thermowood fibres, which we have used as the basis for Lunawood Thermowood Composite. In 2010, **Lunacomp Oy**, a subsidiary owned by Lunawood, was established to run operations related to the product.

Using high-quality ingredients, Lunacomp manufactures Thermowood Composite for use on patios and in other garden structures. Mostly recycled materials are used to make the product: its main ingredients are the Thermowood fibre generated as a by-product by Lunawood's production operations, and high-quality Finnish product Fortum Circo® recycled polypropylene. The non-toxic Thermowood Composite is a maintenance-free product with outstanding dimensional stability.

The production of Lunawood Thermowood began in 2002. Today, Lunawood employs more than 100 people at its plants in Iisalmi, Kaskinen and Joensuu and its head office in Lahti, and in its main market regions across the world. In 2019, Lunawood's turnover was €49M.



LUNAWOOD.COM

This brochure is provided for informational purposes only and no liability or responsibility of any kind is accepted by Lunawood or its representatives, although Lunawood has taken reasonable efforts to verify the accuracy of any advice, recommendation or information. Lunawood reserves the right to alter its products, product information and product range without prior notice.